

KORA

QUILT DESIGNED BY ALEXANDRA BORDALLO

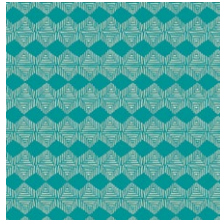


Maara

FABRICS DESIGNED BY ALEXANDRA BORDALLO



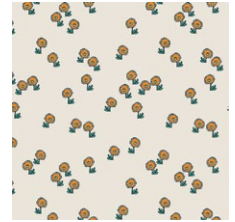
MAA-64900
MAASAI VILLAGE



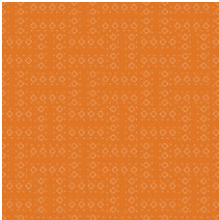
MAA-64901
KHASA MANTLE



MAA-64902
JUNGLE TOUR



MAA-64903
HAPPY LANDING



MAA-64904
TRAVELED ROADS SUN



MAA-64905
SEE THE WORLD



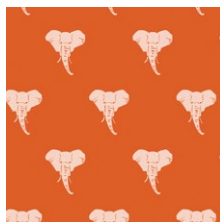
MAA-64906
FYNBOS VALLEY



MAA-64907
SECRET ZEBRA



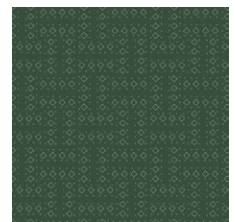
MAA-64908
NGONG HILLS



MAA-64909
WILD & MAJESTIC



MAA-64910
CAPTURED MEMORIES



MAA-64911
TRAVELED ROADS MOON



KORA

FINISHED SIZE | 60" x 60"

FABRIC REQUIREMENTS

Fabric A	MAA-64905	¼ yd.
Fabric B	PE-408	1 yd.
Fabric C	MAA-64901	½ yd.
Fabric D	PE-482	1 ¼ yd.
Fabric E	MAA-64909	¼ yd.
Fabric F	MAA-64908	¼ yd.
Fabric G	MAA-64910	¼ yd.
Fabric H	MAA-64904	½ yd.
Fabric I	MAA-64900	Fat ¼.
Fabric J	MAA-64902	¼ yd.
Fabric K	MAA-64907	½ yd.
Fabric L	MAA-64903	Fat ¼.
Fabric M	MAA-64906	Fat ¼.
Fabric N	PE-402	Fat ¼.
Fabric O	MAA-64911	⅓ yd.

BACKING FABRIC

MAA-64900 4 yds. *(suggested)*

BINDING FABRIC

MAA-64911 (Fabric O) *(included)*

CUTTING DIRECTIONS

¼" seam allowances are included.
WOF means width of fabric.

Four (4) 8⅝" squares from fabrics **A, E, G.**

Sixteen (16) 8⅝" squares from fabric **B.**

Six (6) 8⅝" squares from fabrics **C and H.**

Nineteen (19) 8⅝" squares from fabric **D.**

Three (3) 8⅝" squares from fabric **F, J, K.**

One (1) 8⅝" squares from fabric **I, L, M, N.**

CONSTRUCTION

Sew all rights sides together with ¼" seam allowance.

- You need to create a total of one hundred forty four (144) HST in order to construct this quilt top.
- For the HST construction we are using the Four-At-A-Time method.
- Begin taking one 8⅝" square from fabrics **A** and **B.**
- Place one on top of the other, right side of fabric facing each other and align them.
- Sew the squares together ¼" away from the edge, sew all the way around the square.



DIAGRAM 1

- Use a fabric marker to draw an X on top of the **AB** square, cut on top of the X with the rotary.
- Now you have four **AB** HST, trim each HST to 5½" squares..
- Press open.
- Set aside.

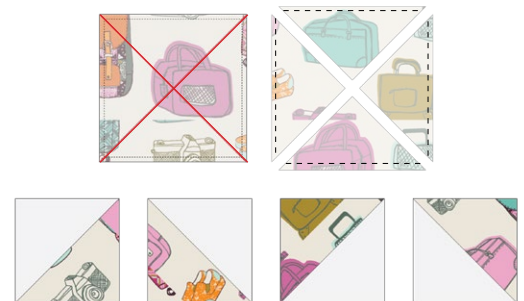
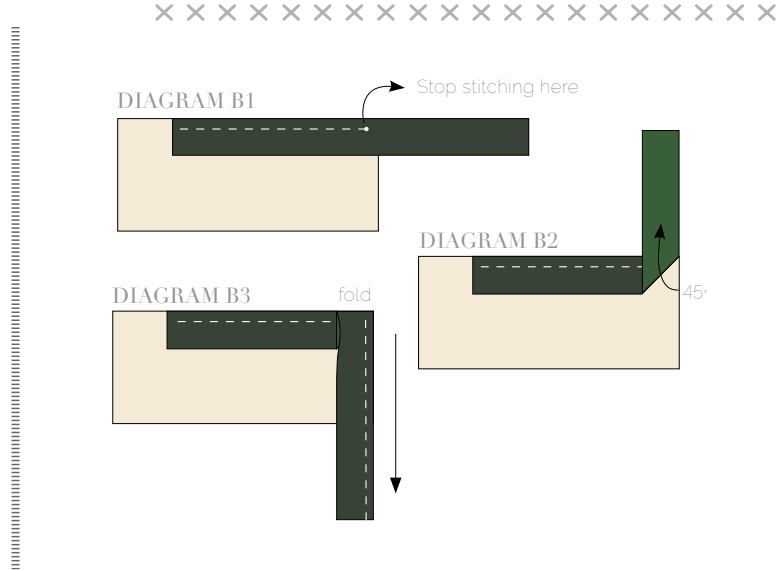


DIAGRAM 2

- Stop stitching before you reach the last 5 or 6 inches. Cut the threads and remove the quilt from under the machine presser foot. Lay the loose ends of the binding flat along the quilt edge, folding the ends back on themselves where they meet. Press them together to form a crease. Using this crease as the stitching line, sew the two open ends of the binding with right sides together (you can help yourself marking with a pencil if the crease is difficult to see).
- Trim seam to $\frac{1}{4}$ " and press open. Complete the sewing. Turn binding to back of the quilt, turn raw edge inside and stitch by hand using blind stitch.



artgalleryfabrics.com

NOTE: While all possible care has been taken to ensure the accuracy of this pattern, We are not responsible for printing errors or the way in which individual work varies. Please read instructions carefully before starting the construction of this quilt. If desired, wash and iron your fabrics before starting to cut.

© 2019 Courtesy of Art Gallery Quilts LLC. All Rights Reserved.